

SHEFFIELD



LINKS



No. 134

April 2008

www.sheffieldu3a.org.uk

From the Chairman

Hello again, everyone. Have you unmistakable signs of Spring in your garden? The darker days are already disappearing and Easter is on the horizon as I write.

I find it difficult to believe that I shall soon be writing my second annual report. I remember all too well the sinking feeling when the AGM was approaching last year and it seemed that we were likely not to have a Treasurer. Somewhere it is written “Cometh the hour, cometh the [wo]man “ and we finally did get a volunteer.

This year, I have to confess to a similar apprehension about filling the Secretary vacancy. The announcement has already been in the past two issues of *Links* and I made special mention in the January issue, so far with no success.

Our outgoing Secretary, Barbara Steel, has made it clear that she does not wish to continue holding any Committee post; although she is more than willing to help her successor to understand what the role calls for. I must also add that she will continue to arrange the annual Lunch and Lecture and is not turning her back on further SU3A involvement. Barbara was the General Coordinator before taking over the job of Secretary and is, therefore, very well known to many long standing members, who quite rightly see her as a considerable fount of knowledge over and above the Secretarial duties.

Her successor is not required to possess a background in SU3A; that would be a bonus. The main tasks are more those of an administrator and perhaps a couple of members might consider a job share – as already very successfully carried out by the Joint General Coordinators. The job is what anyone wants to make of it and I can assure any volunteer(s) that as much help as is required will be given to anyone who might otherwise not feel sufficiently confident. So to anyone who would like to know more, do please get in touch with me and we can talk about what the job entails and hopefully allay any doubts you might have.

Cover Picture: *At the Sheep Market* by M Boden (see page 18)

The Third Age Trust Chairman's January message to U3As nationally contains the following –

“I hope that your U3A continues to thrive; that you are able to encourage members to offer their services on your committees, as group leaders, in welcoming new members. Members have talents which can and should be used for the benefit of all”.

This is surely how SU3A has been able to grow so successfully and is also a reminder that we all really do have something to contribute in one way or another. When I was young “blowing your own trumpet” was a phrase applied to boasting. Perhaps these days we could reconsider it more positively as a willingness to be part of the orchestra, making music.

Meanwhile, as you will find in this issue, SU3A activities continue to flourish and, as ever, there are reports on past and future events of interest. You will also have seen that Sheffield members splendidly featured on the front cover of the last issue of U3A News.

Joan Keogh

Sheffield U3A News Update

Executive Committee Report

The last meeting of the Committee was held on 29 February. Our Chairman Joan Keogh reported that it had been decided to postpone the purchase of the second laptop computer (authorised at the last meeting) until there was clear evidence of need or it became inappropriate to repair the current computer, should it become faulty.

Barbara Steel, our Secretary, reported that in future all members who receive U3A News would automatically receive, free of charge, a copy of *Sources*, U3A's informative national educational journal, as well as *U3A News*. She also reported that to date there had been no confirmed interest in the soon to be vacant post of Secretary and that only two nominations had been received for the three vacancies on the Executive Committee. Members expressed

their concern at the unwillingness of SU3A members to volunteer, despite our growing membership size! This could seriously jeopardise the future of Sheffield U3A.

Our Treasurer Jim Rowland updated members on the Financial Statement for 2007 (see AGM insert in the centre of this issue of *Links*). He commented on the size of the current balance, which he expected to reduce during 2008.

General Coordinator Brian Bezant reported that we now had 148 Groups. Following a general discussion, it was agreed that an advice leaflet for organisers of short courses was required, to highlight the key requirements that these only be for SU3A members and that tutors should be volunteers and not be remunerated. He also reported on discussions with the Archaeology Group Coordinator. As some of their meetings were not open to all SU3A members, it was agreed that they did not meet the criteria to become an Open Group. However, the Group was encouraged to give notice in *Links* of meetings that were open to all members.

A written report was received from our Web Coordinator. She highlighted the disappointing lack of any response of some Groups to requests for their details to be posted on Group Home Pages. This would be followed up. John Lees presented a progress report on preparations for the Annual Members' Meeting and Shelagh Woolliscroft updated members on the Outreach Project in North Sheffield, which had attracted a net increase of 53 members from this area since October 2007.

Roy Darlison attended to give a report from the Gift Aid Working Group. He outlined the factors that were taken into account during initial consideration of applications from Groups for financial support for their activities. An initial total of 16 applications were considered by the Committee and nine were approved (details of the successful applications will be summarised in a future issue of *Links*). These included a donation of £300 to publicise SU3A via its significant participation in the Sheffield Walking Forum's *Walking Festival* in May/June 2008.

The major item discussed at the meeting was the Boundary Review

report prepared by John Lees at the request of the Committee at its January meeting, as part of the wider review of the future direction of SU3A. The report highlighted the problems that had arisen since the last review in 2004. It was noted that at present only 10% of the membership resided outside the city boundary. After detailed discussion it was agreed that in future anyone residing within a 15 mile radius of the city centre would be eligible for membership of Sheffield U3A; that this new boundary would be applied flexibly; that all current members would retain full membership rights and that neighbouring U3As would be advised of this change. It was also agreed to closely monitor, by postcode district, the outcome of these changes in membership eligibility at the end of March and September each year.

in future anyone residing within a 15 mile radius of the city centre would be eligible for membership of Sheffield U3A

During the course of the Boundary Review a serious problem had been identified relating to non-members being allowed to regularly participate in some Walking Groups. This had potentially serious legal implications for walk leaders and participants and Group Coordinators would be reminded of their obligations. In the light of advice from the National Office, it was agreed that SU3A members who wished to attend any Group on a trial basis as visitors should only be permitted to attend on a maximum of two occasions, in order to ensure compliance with the conditions of the U3A insurance policies.

The next meeting will be held on 2 May 2008.

Roger Heesterman

Editorial Note

Could I please remind contributors that e-mailed text contributions should be in *.rtf* or in Word 2003 *.doc* format; and that photographs should be in unedited *.jpeg* format. Should you wish items posted to me (pictures, CDs etc.) to be returned, please enclose a stamped addressed envelope with the correct postage.

**ANNUAL MEMBERS MEETING
and SHEFFIELD U3A 22ND AGM**

25 April 2008 - 2.00 pm

The Library Theatre, Tudor Square, Sheffield 1

At this year's AMM/AGM *Lars Tharp* is coming to speak exclusively to SU3A. A regular contributor to the Antiques Roadshow since 1985, this raconteur, author and lecturer mixes his educative stories concerning the arts and ceramics, with more humorous tales of life behind the cameras and on the road.

Lars WILL NOT be valuing items at this event, so please leave your heirlooms at home.

Members are requested to arrive between 1.15 and 2.00 pm to register, when tea and coffee will be available. The meeting will commence at 2.00 pm. Only current 2008 Members may attend and vote at the AGM. Limited access for Members with a disability is available - please telephone the Secretary in advance for details.

The Agenda for the AGM and 2007 minutes are published in this issue of *Links* - please bring your copy with you.

There will be three vacancies on the Committee. The Committee meets bi-monthly, usually on the first Friday of the month. Nominations for election to the Committee should be made on the form at the back of this issue of *Links* and should reach the Secretary no later than Friday 11 April 2008.

Barbara Steel , Secretary

No Polar Bears - thank you !

After a splendid lunch followed by lemon meringue pie with clotted cream, we settled down to listen to our three young guests: *The Lost Penguins*. It was Barbara Steel's latest Lunch and Lecture event at the Sheffield Park Hotel.

They'd climbed Kilimanjaro, trained in Scotland and Norway and dragged tyres round Hyde Park. All this to get fit for a 350 mile team race to the Magnetic North Pole.

The Lost Penguins showed us an impressive array of equipment.

Their tent was extremely strong and clothing extra thick with various gloves to fit the occasion. Rations will be porridge for breakfast and sweet and sour chicken each evening for a fortnight. The stomach boggles! During the day whilst dragging



equipment over snow and ice they'll be grazing off nuts, dried fruit, cheese and chocolate. Hopefully no big fat polar bears will join them. They've been trained to drive bears away with shots overhead and outrageously freaky performances lower down. Keeping up their own body weight does seem to be a problem. All three are beautifully slim.

We wish them well in their venture to raise funds for WaterAid in underdeveloped regions of the world. Hopefully those plentiful lunches at the Park Hotel will go some way in helping them out.

Many thanks Barbara for a memorable event.

Peter Barclay

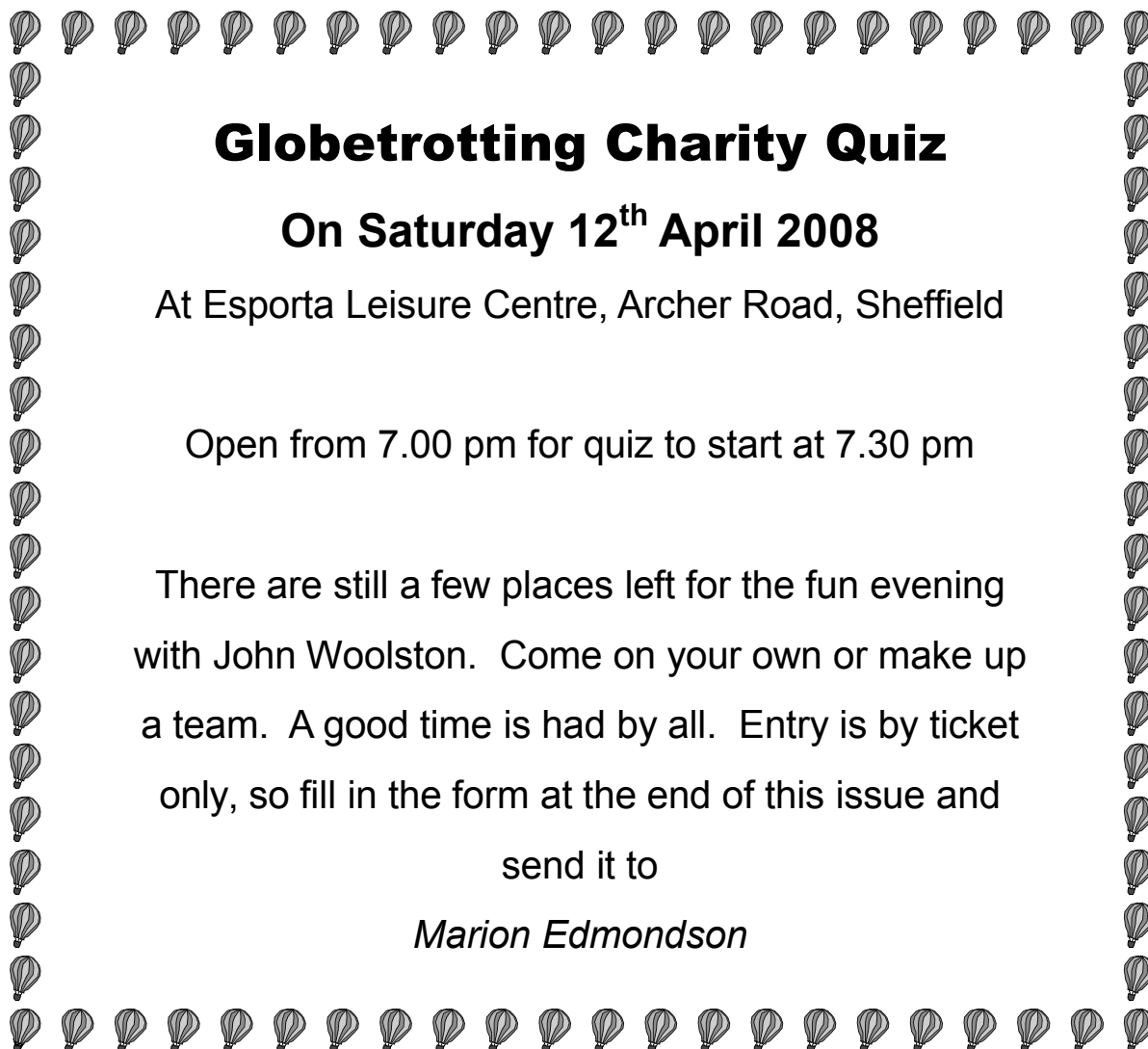
[n.b. progress updates on www.lostpenguins.com]

SU3A's Audio-Visual Equipment

There must be a number of Groups that are not fully aware of the equipment we now have or how it can best be used to illustrate talks. I have, therefore, prepared a double-sided leaflet detailing the different items of equipment, their characteristics, advantages and disadvantages. If anyone would like a copy, please ring or write to me.

In my opinion, the new equipment offers several advantages (including absence of cost) over older methods such as flip charts, 35mm slides and overhead projectors. Incidentally I would be happy to help people get started in using the new equipment.

John Brooke



Globetrotting Charity Quiz

On Saturday 12th April 2008

At Esporta Leisure Centre, Archer Road, Sheffield

Open from 7.00 pm for quiz to start at 7.30 pm

There are still a few places left for the fun evening with John Woolston. Come on your own or make up a team. A good time is had by all. Entry is by ticket only, so fill in the form at the end of this issue and

send it to

Marion Edmondson

Computer Software & Hardware Discounts

Are you aware that as a member of a U3A you can buy some computer hardware and software, for your private use, at greatly reduced rates through the National Office? For further details go to www.u3a.org.uk, login to the Members' Area and select Computing Advice from the U3A Member Menu on the right or email the National Office via website@u3a.org.uk using the Contact Us link on the upper menu bar. They will reply with price details if the item is available.

Group News

Aspects of Art I

You are invited to join the Group on a visit to Shibden Hall, Halifax, and Leeds Art Gallery on Thursday 22 May 2008.

The Hall, which is set in a large public park, dates back to 1420 and reflects the taste and needs of different owners, one of which, the Lister family, lived there for 300 years. After coffee, there will be a guided tour of the house in which there is a magnificent collection of 17th and 18th century oak furniture. After lunch we will be introduced to the art collection by the Education Officer at Leeds Art Gallery.

The cost of the trip is £16 per person, which includes coffee and admission to Shibden Hall. Applications may be made using the reply slip at the end of the April issue of *Links* and should arrive no later than Thursday 24 April.

Elizabeth Dawson / Beryl Moore, Coordinators

Shakespeare for Pleasure

Various unforeseen circumstances have resulted in a dwindling number of our members. We meet on alternate Tuesday mornings at 10.00 am in my house in Nethergreen, to watch DVDs or videos of Shakespeare productions, which we then discuss. If you would like to join us, please ring Kay Nicholson.

Classical Concertgoers' and Enjoying Opera Groups

Our next visit is a joint event to the Hippodrome Theatre, Birmingham, on Wednesday 18 June 2008, for a performance given by the Welsh National Opera, conducted by Carlo Rizzi. The soloists include Barry Banks and Imelda Drumm. It consists of a programme of music by Rossini, with a wide range of orchestral, solo and other vocal music from his extensive output. Rossini's music is always lively, tuneful and enjoyable, and we can look forward to a very pleasant evening. An optional pre-concert talk is included. The coach will leave the bus parking bay on Ecclesall Road South, near the top of Millhouses Lane, promptly at 4.00 pm.

The inclusive cost of the visit is £30 per person and applications may be made using the reply slip at the end of the April issue of *Links*. Please send applications to Derek Shipley, as soon as possible, but not later than Wednesday 30 April. Please include the names and contact numbers for all members for whom you are applying, together with a stamped addressed envelope.

Our visits are open to all current SU3A members and no special Group membership is required.

Derek Shipley / Nigel Sandford, Coordinators

Walking Group P

Mike Rodgers joined the Group on one of its recent walks. At High Well, above Taddington, he produced from the depths of his rucksack some bubbly and smoked salmon sandwiches to celebrate wife Jean's birthday. Jean, centre, is the Coordinator of this relatively new Group.



[photograph by Dick Pedley]

Literature Network

The next meeting of the Literature Network will be on Thursday 22 May 2008, at 2.00 pm, when Helen Farish, will read from her poetry. Her book *Intimates* won the Forward Prize for the Best First Collection in 2005 and she was also short-listed for the T.S. Eliot Poetry Prize. She writes lyrically and tenderly. She is a Lecturer in Creative Writing at the University of Lancaster and has been a Poet in Residence at the Wordsworth Trust, Dove Cottage, Grasmere. *Intimates* is published by Cape and is available from Waterstones, price £9.

The event will take place at the usual venue, Shirley House, 31 Psalter Lane, adjacent to St. Andrew's Church; and is open to all SU3A members.

Bookings may be made by using the reply slip at the end of the April issue of *Links*. Please send with a cheque, for £3.50 per person, payable to SU3A Literature Network, to Mrs. P. West and enclosing a stamped, addressed envelope.

Rita Brent, Coordinator

News from the North

The Groups which were formed last autumn in the Chapeltown area are still doing well. Gardening (Aspen) and the newly formed Music Appreciation are now based in Hillsborough Library. Once Groups are established you will find them in the back pages of *Links*. Numbers for Spanish for Beginners are building up, but I would welcome more enquiries.

On 9 April from 10.00 am to 3.00 pm there will be a 'drop-in' for prospective members at Firth Park Library, with the aim of setting up one or two more Groups in that area.

Is anyone keen to try Tai Chi (a gentle form of exercise)? We have the offer of expert tuition in a special fitness centre at Paces, High Green. Please phone Shelagh Woolliscroft.

New Groups and Short Courses

ICT Course for Beginners

I shall be running an ICT Course for Beginners at Notre Dame School on Tuesdays from 4.00 to 6.00 pm starting on Tuesday 20 May 2008, running for about 12 weeks. The course will proceed at a fairly leisurely pace and will include word processing, email and the Internet and some file management. Would anyone interested please contact me.

Clare Chiba, Coordinator

Volunteers Needed

We are seeking healthy males aged 60 - 70 to participate in a research project looking at language and navigation. We are interested in navigation processes in people with normal language abilities in comparison with people who have language impairments after a stroke or similar brain injury. This research is intended to help us gain a better understanding of the thinking skills that are retained or impaired after a stroke.

You would be asked to come to the University of Sheffield Department of Psychology to take part in an experiment. This should take around 30 - 40 minutes, during which you will be asked to take part in tasks that involve remembering the location of an object and repeating speech. The session will be recorded on video and audio tape. Recordings and all other information will be stored confidentially and will not be shared with anyone without your permission. Travel expenses will be reimbursed.

If you are interested in volunteering for this project, please call Jude Bek on (0114) 222 2410 or email j.bek@sheffield.ac.uk.

Committee Vacancies from April 2008

There will be three vacancies on the Committee at the next AGM. The Committee meets bi-monthly, usually on the first Friday of the month. If you are interested, please contact Barbara Steel for further information. See page 16 for a nomination form.

Barbara Steel, secretary@sheffieldu3a.org.uk

Travel News

Travel Organising Committee

Shirley Marney, Coordinator

Ken Parkin, Treasurer

Derek Shipley, Minutes Secretary

Peter Frost

Barbara Robertshaw

Margaret Bullivant

Only members of Sheffield U3A can join the tours/day trips.

Holiday Insurance - All members travelling have full responsibility for arranging their own Travel Insurance. In no circumstances will Sheffield U3A be responsible for covering claims for loss of life, personal injury, medical expenses, accidents, loss or damage of luggage or personal property, cancellations, delays or loss of deposits. Each member **MUST** insure themselves against such risks.

Disabilities - When sending an application slip for a holiday or day trip, please inform the organiser of any disabilities. Whilst every effort will be made to accommodate a disabled person on all social trips, if there is a conflict of opinion the Tour Operator / Travel Agent or day trip venue will make the final decision.

Cancellations - In the case of a cancellation please contact the organiser or another member of the Travel Group Committee as soon as possible. **Refunds** cannot be given for cancellations unless a replacement can be found.

Pick-up Point - Please contact the Organiser if you are unable to be at your pick-up point, or want to change it.

Envelopes - Please ensure that you attach the correct postage when sending applications. Envelopes larger than 240 x 165 x 5 mm (approx 9.4 x 6.5 x 0.2 in) require a large letter stamp. When sending a **stamped addressed envelope** it should be no less than 210 x 150 mm (8.2 x 5.9 in), with the correct postage for its size.

Please do not park in front of the doctor's surgery on Millhouses Lane.

Travel Excursions and Holidays

Highlights of Turkey

5 - 18 October 2008

Full details of this 14 day /13 night holiday may be found in the last *Links*. This is a very interesting and varied itinerary. For further details please ring Shirley Marney on (0114) 235 0801. The cost is £1,170 (single supplement £199) and includes flights, taxes, hotels, half board, coach throughout, tour manager, entrance fees, tips for drivers and the tour manager, but not tips for the hotels. Full comprehensive insurance **MUST** be arranged by each member.

Please complete the booking slip at the end of the April issue of *Links* and send to Shirley Marney, together with a stamped addressed envelope and a deposit of £150 per person (cheque made out to Sheffield U3A Travel) **as soon as possible**.

Settle - Carlisle Railway Trip

Wednesday 14 May 2008

We depart from Skipton on the 10.26am train direct to Carlisle. This many consider to be the most scenic route in the North of England, including the splendid 24 arched Ribbleshead Viaduct and the wonderful Dales countryside.

A train guide will join us at Skipton to relate the interesting features and history of the line. Following arrival in Carlisle at 12.17pm, in time for lunch, a further 2 3/4 hours free time is yours to visit the various historic buildings and the popular Tullie House Museum and Art Gallery.

The total cost including all travel, guide and gratuities is £37 per member, excluding lunch.

To reserve a place, please complete the slip at the end of the April issue of *Links* and send with a cheque payable to Sheffield U3A Travel and a stamped addressed envelope to Peter Frost.

Quarry Bank Mill and Styal Estate

Monday June 30 2008

This unique property consists of Quarry Bank Mill, Quarry Bank House and gardens, the Apprentice House and Styal village. The mill, with its huge water wheel, has been restored to working order and still produces calico. The Apprentice House built in 1790 allows us some insight into the living and working conditions of the 100 child workers employed by Samuel Greg. The Greg family house is not yet open to visitors, but its surrounding gardens have been restored to their original layout and open this year to visitors. Styal village, which was built to house the mill workers, can be reached by a short walk through the estate. The old cottages, chapels and school are still there and worth looking at. If you are interested in social or industrial history, textiles, gardening or engineering, all set in a beautiful country park, come with us to Quarry Bank.

There is an excellent restaurant at the Mill serving hot meals, light lunches and snacks. You may, of course, take your own packed lunch to eat in the grounds. Food and drink is not included in the cost.

The price per person is £26, or £14.40 for National Trust members. Please complete the application form at the end of the April issue and return as soon as possible to Margaret Bullivant.

******* Tall Ships Liverpool *******

PLEASE NOTE that the dates have been changed from 18 – 20 July to 19 - 21 July. Any member booked on this trip for whom the new date is inconvenient, should contact Shirley Marney on (0114) 235 0801 **as soon as possible**.

SHEFFIELD U3A TRAVEL

PLEASE NOTE THAT

ONLY POSTAL APPLICATIONS

WILL BE ACCEPTED FOR HOLIDAYS AND DAY TRIPS

PLEASE ENSURE YOU USE THE CORRECT POSTAGE

**NOMINATION FORM FOR ELECTION TO
SHEFFIELD U3A COMMITTEE 2008**

To be returned by **Friday 11 April 2008** to the Secretary,
Barbara Steel

Name of person nominated:

Address

Postcode Tel No

Email:

2008 SU3A membership number:

Groups to which Nominee belongs:

Name of Proposer:

2008 SU3A membership number:

Signature of Proposer:

Name of Seconder:

2008 SU3A membership number:

Signature of Seconder:

I am a member of Sheffield U3A and agree to be nominated as a
candidate for election to the Executive Committee of Sheffield
U3A at the Annual General Meeting on Friday 25 April 2008.

Signature of Nominee:

Date:

Holiday Review

A World in One Country

What a wonderful description of our November 2007 holiday in South Africa, stunning scenery, vibrant colourful people.

Our first walk into Cape Town watching the Indian Ocean crash into the Atlantic rollers, sending great plumes of water six to eight feet high, was breathtaking and exhilarating. On our arrival at the waterfront we saw seals basking in the sun, whilst sitting and enjoying a drink watching dancers in their colourful costumes entertain us all free of charge. Another world.

Hotels throughout our trip were of a high standard offering a good choice of food, with encouragement to try local dishes which, in the main, were excellent and varied. The staff in most hotels were very friendly and smiling.

The scene was set for our second day with a tour of a wine growing area and of course the inevitable wine tasting, all of which were excellent. This was followed the next day with a trip up Table Mountain with stunning views of the city, seas and more mountains. We travelled from the East to the West point taking photographs of the Twelve Apostles (mountains), stunning against the blue sky; and then across to the Cape of Good Hope, where we saw the wild baboons roaming. We climbed up the lighthouse for more stupendous views. After lunch to Boulders Beach where the Jackass Penguins breed, so small and sweet even though they were moulting and feathers were everywhere. Our tour ended with a visit to Kirstenbosch Botanical Gardens with their wonderful display of protea flowers - the South African emblem with their beautiful colours. What a glorious day.

Our next adventure was a visit to an ostrich farm where several of us mounted an ostrich – not to ride, but for a photo shoot. Others stood on ostrich eggs without breaking them.

Our flight from Port Elizabeth to Durban was rather turbulent and the day ended after dinner when we sat very comfortably, with a gin

and tonic, watching an electric storm with its fork lightning blazing across the sky, making wonderful coloured patterns. This was accompanied by torrential rain, but we were safe and snug in bed.

Next day the rain had stopped, but we felt the perils of the storm, with just 11 kilometres to travel to our destination - the Sani Pass Hotel. We discovered that the top surface of the road had been removed prior to resurfacing, but due to the weather the surface was just a sheet of wet clay. Work had stopped, but our driver carried on and, of course, we became stuck - with the backend of the coach sliding perilously near to the edge of a six foot drop. Fortunately we stopped just short, whilst diggers, tractors and eventually a larger vehicle with a steel chain came and managed to tow us out. A great cheer went up as we proceeded to our hotel.

Visiting a tribe in Lesotho, after travelling up the mountains and through the Sani Pass, we entered one of their homes, within a kraal, and mixed with the women and children. This proved to be one of the highlights of our holiday.



Entering Swaziland, being entertained with a tribal dance and drinking their beer, which was abruptly ended with another thunderstorm, was all good fun.

Getting up at dawn and going on safari and seeing the exotic array of birdlife in their natural habitat was another wonderful experience; as was a visit to a river which had ground out great boreholes leaving weird and wonderful patterns in the rocky river bed.

So many sights and experiences - thank you again Shirley for organising a great and wonderful holiday.

Lily and Dennis Taylor

[photograph Myra Kirkpatrick]

Travel Group AGM Art Competition

The annual Travel Group Art Competition was held on 21 February 2008, with a fine display of exhibits. Photographs of all the winning entries, taken by John Brooke, can be seen on the SU3A website at www.sheffieldu3a.org.uk.

The winners in each category were as follows -

Animals

(* see front cover)

| | | |
|-----------|-----------------------|------------|
| 1st Prize | At the Sheep Market * | M Boden |
| 2nd Prize | Do Not Disturb | B Priest |
| 3rd Prize | A Robin | B Levers |
| Commended | Yorkshire Frogs | L Craghill |

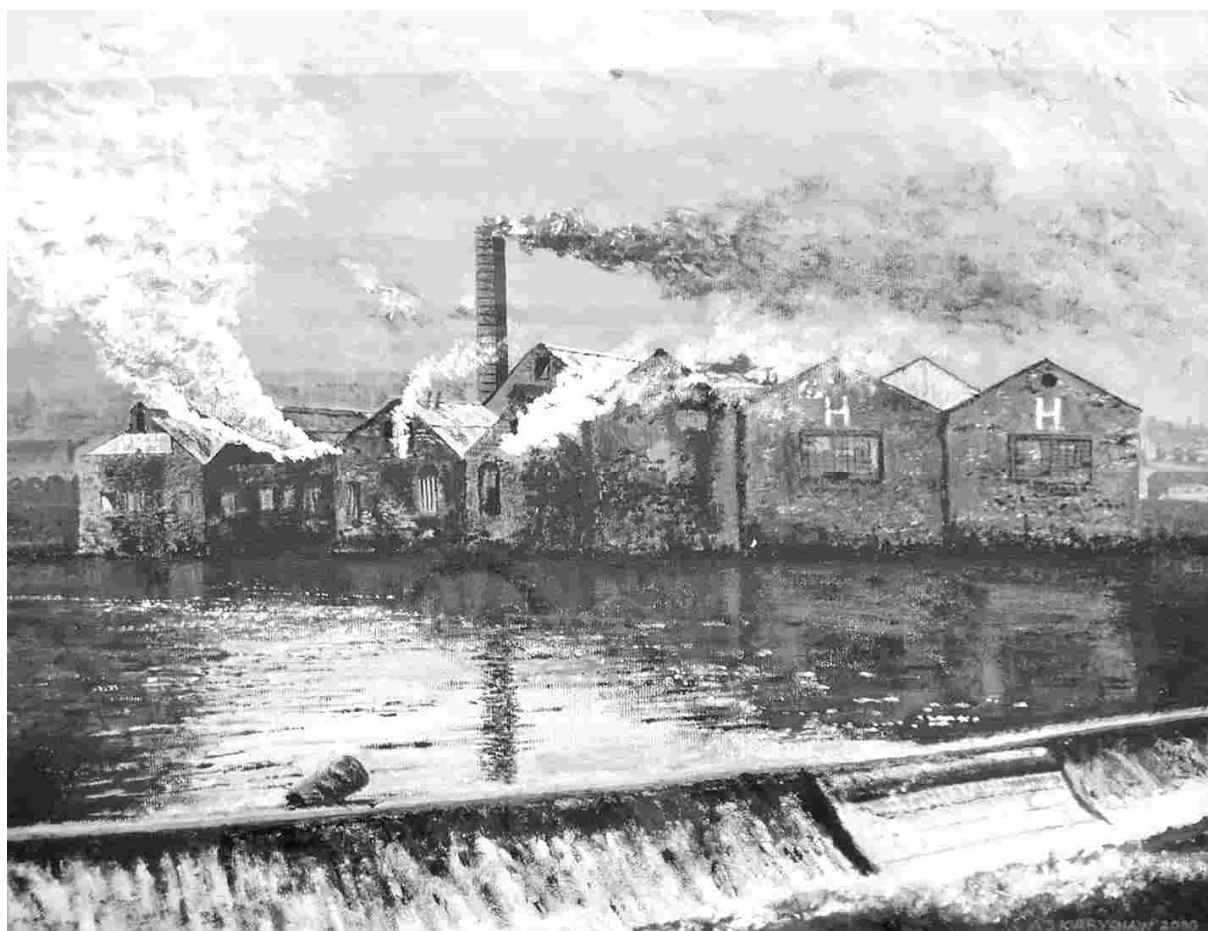
Landscape / Seascape

| | | |
|-----------|---------------------|-------------|
| 1st Prize | Landscape | R Lamb |
| 2nd Prize | Peace Perfect Peace | J Lapper |
| 3rd Prize | A Waterfall | A Parker |
| Commended | Derwent Water | A Kirbyshaw |

Still Life

| | | |
|-----------|----------------------------|--------------|
| 1st Prize | Autumn Fruit Bowl | M Powell |
| 2nd Prize | Hydrangeas from the Garden | P Richardson |
| 3rd Prize | Flower Girl | B Priest |
| Commended | Vase of Flowers | B Levers |

Townscape



| | | |
|-----------|-----------------------|-------------|
| 1st Prize | Industrial Landscape | A Kirbyshaw |
| 2nd Prize | Imaginary Workplace | A Walker |
| 3rd Prize | Street Market in Peru | M Boden |
| Commended | Red Rooves | S Colley |

A pair of royal blue Berghaus gloves were found after the Travel AGM. Please contact Shirley Marney on (0114) 235 0801.

Sheffield U3A Calendar

2008

| | |
|----------------|--|
| April 9 | Anderton Boat Lift & Dunham Massey |
| April 12 | Globetrotting Charity Quiz, Esporta |
| April 25 | AMM / AGM, with presentation by Lars Tharp |
| May 14 | Settle to Carlisle Railway |
| May 18 - 22 | Berlin (Short Break) |
| May 22 | Aspects of Art I, Shibden Hall & Leeds Art Gallery |
| May 22 | Literature Network, Helen Farish |
| June 2 - 13 | Germany's Romantic Road, Bavaria |
| June 18 | Classical Concertgoers' & Enjoying Opera, Hippodrome Theatre, Birmingham |
| June 30 | Quarry Bank Mill & Styal Park |
| July 16 | Leeds & Liverpool Canal, cruise and lunch |
| July 19 - 21 | Liverpool and the Tall Ships (Short Break) |
| August 21 | Port Sunlight |
| Sept 7 - 11 | Suffolk (Short Break) |
| September 17 | Tatton Park and Gardens |
| October 5 - 18 | Highlights of Turkey |
| October 8 | The Colour Museum, Bradford, & Temple Newsam House, Leeds |
| November | Charles Rennie Mackintosh House and Shoe Museum, Northamptonshire |
| December | Stratford on Avon |